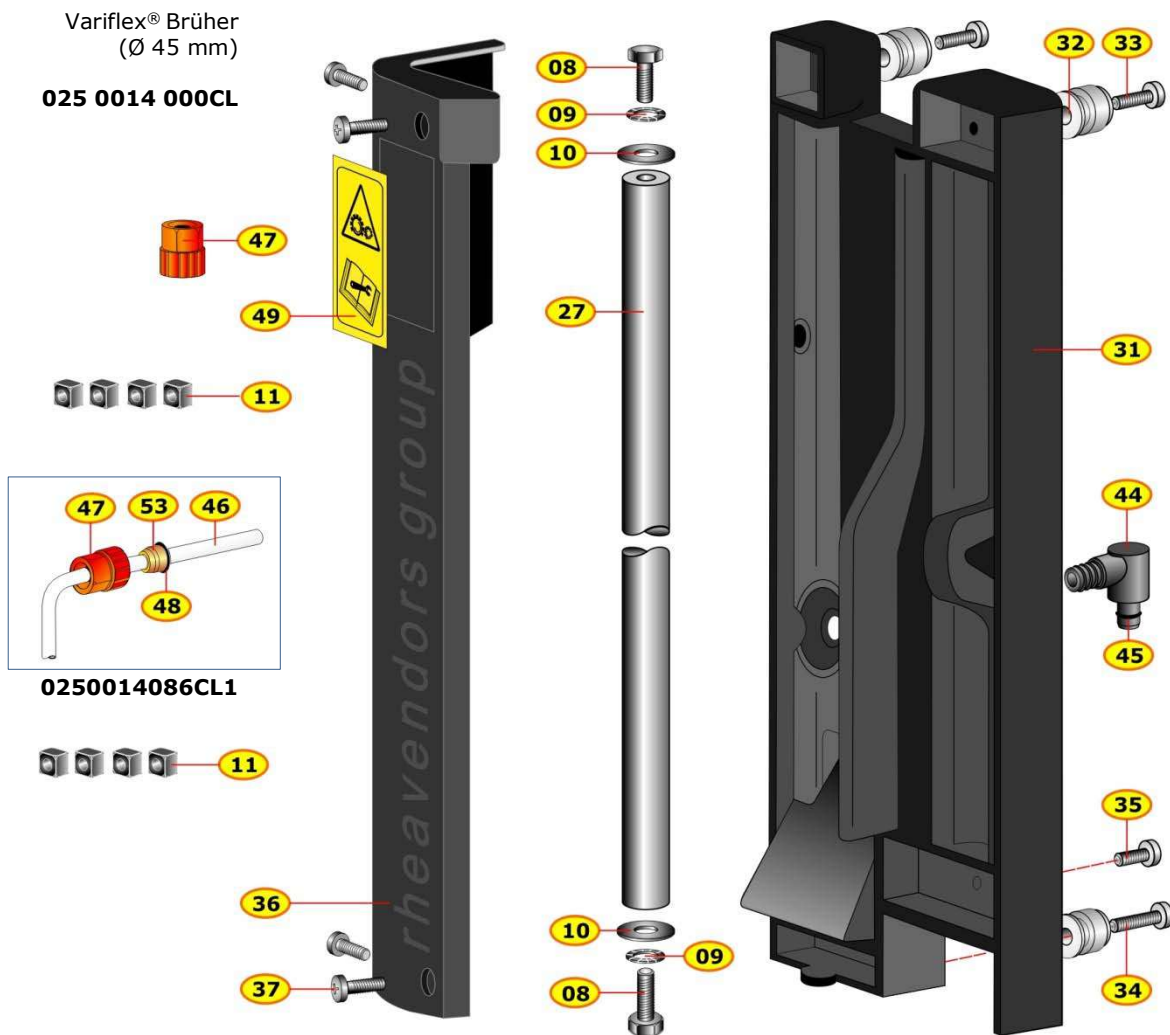


Variflex®-Brüher by rheavendors group



#	0250014000CL	Guppo caffè Variflex® Ø45	Variflex® brewer group Ø45
08	VIT0000249	Vite TE M6x16 A2 UNI5739	Hex head screw M6x16 A2 UNI5739
09	VIT0003113	Roset.vent. -E- 6,4 A2 DIN6798	Spring washer -E- 6,4 A2 DIN6798
10	0250014079	Rosetta D15 d6.5 Sp.1.5	Washer D15 d6.5 Sp.1.5
11	VIT0009112	Dado M4 10x10x4,5 A2	Nut M4 10x10x4,5 A2
27	0250014013	Guida cilindrica	Cylindric shaft
31	0250014011	Piastra camma posteriore	Rear plate
32	0250014072	Perno guida superiore gr. varif	Upper guide pin
33	VIT0001006	Vite TCB M4x30 A2 DIN7985	Pan head screw M4x30 A2 DIN7985
34	VIT0000033	Vite TCB M4x35 A2 DIN7985	Pan head screw M4x35 A2 DIN7985
35	VIT0001011	Vite TCB M4x20 A4 DIN7687	Pan head screw M4x20 A4 DIN7687
11	VIT0009112	Dado M4 10x10x4,5 A2	Nut M4 10x10x4,5 A2
36	0250014019	Piastra frontale	Front plate
37	VIT0001009	Vite TCB M4x16 A4 UNI7687	Pan head screw M4x16 A4 UNI7687
47	0250014086	Dado tubo H2O	Hose nut H2O
44	0250014085	Innesto maschio	Male connection
45	GUA0000004	OR 104	OR 104
49	1010100160	Eti. avvertenza gruppo variflex	Warning label variflex group
#	0250014086CL1	Tube piastra/cursore gr. Variflex®	Hose plate/chamber Variflex® brewer
46	TTEF02/04T	Tube -PTFE- aliment .cl.806 d.2x4	Hose -PTFE- food .cl.806 d.2x4
47	0250014086	Dado tubo H2O	Hose nut H2O
53	0100002014	Anello di serraggio SO1-4 MES	Lock ring SO1-4 MES
48	GUA0000061	OR 2010 viton	OR 2010 viton